

Assembly Host™ Technical Manual

February 20
2019

Assembly Host™ is server side software allowing the user to continuously download and store torque data from a variety of torque devices.

Table of Contents

Assembly Host™ Requirements	3
Software Installation.....	4
Software Uninstall.....	4
Software Licensing	5
Database Setup	6
Database Purge Settings	7
Starting and Stopping the Assembly Host™	8
System Connections.....	9
Reports.....	10
Client Side Rundown Reports (No longer in development – Please use web reporting)	10
Web Based Rundown Reports	11
Open Protocol Setup.....	12

Assembly Host™ Requirements

- The Assembly Host™ software is designed to run on Windows 7 or later or Windows Server 2008 64bit or later.
- Assembly Host™ requires that .net 4.0 framework is installed on the machine running the server.
- Assembly Host™ will supports Microsoft SQL, either SQL Express or SQL, or it will run on an internal database.
NOTE: If using Microsoft SQL Express, you must enable remote connections for the Assembly Host™ to connect.

Software Installation

Installing the Assembly Host™ software is started by simply clicking on the 'Setup' icon in the installation package. After initial install, Assembly Host™ will create all necessary firewall rules. Database table structure will be created when the service is run for the first time.

**** NOTE: .NET 4.0 must be installed prior to running the installer. Failure to do so will result in an incomplete installation. ****

Software Uninstall

Uninstalling the Assembly Host™ is completed using the Windows Uninstaller service. When the uninstaller runs, configuration files and database data is left intact. This allows for newer versions of Assembly Host™ to be installed.

Software Licensing

Assembly Host™ software can run in one of two modes:

1. Evaluation Mode – Limited to 24 hours of run time between shut downs and a maximum of 2 clients connected at a time.
2. Licensed Mode – All features are activated without any run time limit. The number of clients is limited by the license purchased.

During the first startup of the Assembly Host™ console application, the operator will be prompted to select Evaluation Mode or Licensed Mode. If Licensed Mode is selected you will be prompted to enter an activation code, which will arrive by e-mail after you purchase the software.

To purchase a license contact ATI Technologies by phone at (502) 426-9194 or visit us on the web at <http://www.atihitech.com>.

Database Setup

Before starting the Assembly Host™ software for the first time, the database options must be setup. This is done by first opening the Assembly Host™ Console, then clicking on ‘Settings’ from the Console’s menu and choosing ‘DataBase Connection Settings’. The Assembly Host™ Database Connection screen will look like the following:

NOTE: The Assembly Host™ Service must be stopped in order to modify any of the database settings.

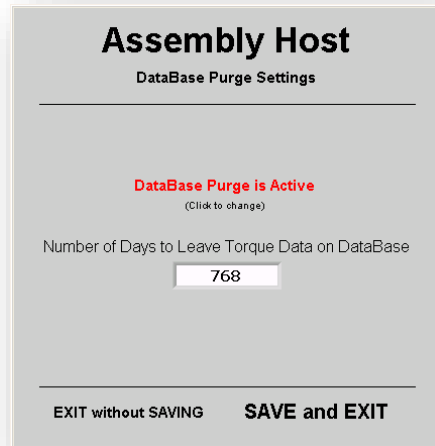
The first step in setting up the DataBase Connection settings is to choose your database type. Assembly Host™ supports two database types Microsoft SQL (full and Express versions) and an internal database. The internal database requires no setup other than selecting the option for use in this screen.

If the ‘**Microsoft SQL**’ or ‘**My SQL**’ settings are chosen, the ‘Server Name’, ‘User ID’ and ‘Password’ settings entered here must match an Administrator account on the selected database. Use of an administrator account is necessary so that the Assembly Host™ Service can create the required database schema and tables required for its operation. After the initial startup of the Assembly Host™ Service, the database account can be changed to a user that has only read/write access to the database. Once the required server login information has been entered, be sure to test the connection by clicking on the ‘TEST Connection’ button.



Database Purge Settings

When database size is an issue, such as when using Microsoft SQL Express, the Assembly Host™ software can be setup to automatically delete data from the rundown tables. This option is defined from the Assembly Host™ console by going to the menu and clicking ‘Settings’, ‘Database Purge Settings’, which will bring up the following screen:



When the database purge is activated there is only one setting to configure, ‘Number of Days to Leave Torque Data on the DataBase’. This setting will setup the Assembly Host™ to **delete** any rundown data that has a date and time older than the current date and time minus the number of days entered.

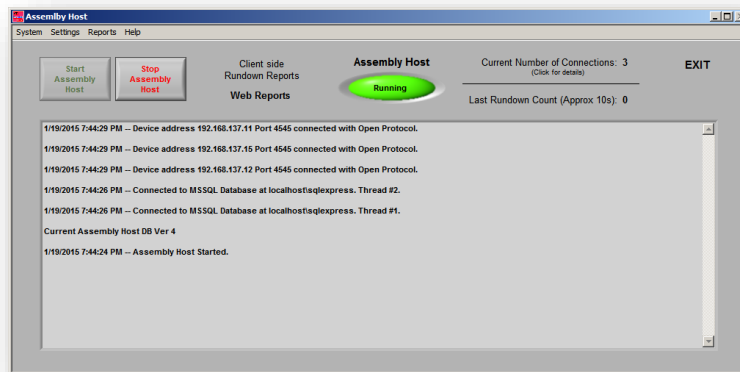
NOTE: The number of date and time used to identify each record is the date and time of the rundown according to the clock in the torque device, not the PC at the time of the rundown. Although the Assembly Host™ does update the controller’s date and time upon connection, there is still the ability for that date and time to be changed at the controller.

Starting and Stopping the Assembly Host™

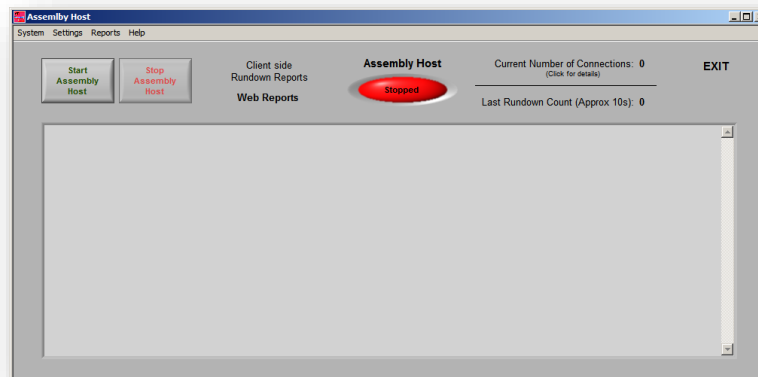
The Assembly Host™ software has multiple installed components including, the Assembly Host™ Service and the Assembly Host™ Console.

The Assembly Host™ Service connects to each of the torque devices, gathers that rundown data and records it to the database and .csv files. The console is not required to be open at any time while the service is running, once the initial configuration of the Assembly Host™ is complete.

To start the Assembly Host™ service, simply click on the ‘Start Assembly Host’ button on the console. This will start the Assembly Host™ service, verified by the light in the center of the screen turning green.



To stop the Assembly Host™ service, simply click on the ‘Stop Assembly Host’ button on the console. This will stop the Assembly Host™ service, verified by the light in the center of the screen turning red.

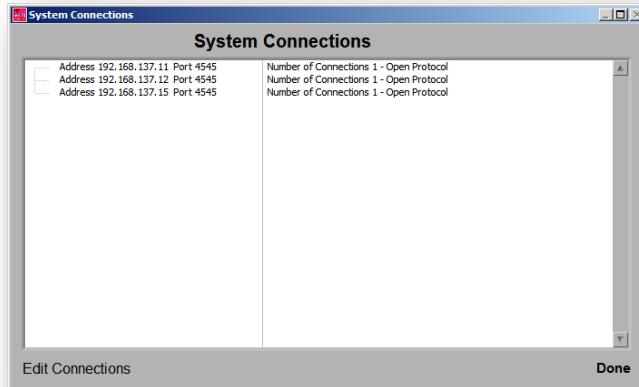


After initial setup, Assembly Host™ service can also be started and stopped from the Windows Services Controller located in the Windows Control Panel.

NOTE: By default the Assembly Host™ service will start on each computer restart, without a user login.

System Connections

Assembly Host™ has a connection monitoring screen that is accessible either through the Menu by clicking on 'System' then 'System Connections' or by clicking on the 'Current Number of Connections' text on the main screen. The System Connections screen is used to monitor what units are currently connected to the Assembly Host™ and how many tools each unit is running.



To add new connections, see the 'Open Protocol' section of this document.

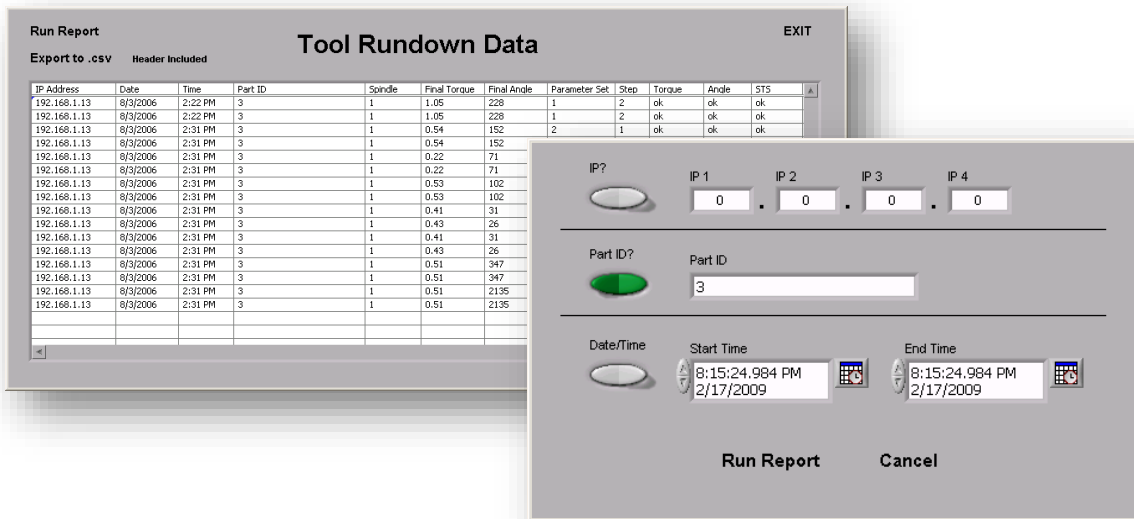
Reports

Assembly Host™ features two types of reporting for torque data.

- Client Side Rundown Reports
- Web based Rundown Reports

Client Side Rundown Reports - (No longer in development - Please use web reporting)

Assembly Host™ has a simple rundown report that is available for use from the console. The run down report can be filtered by either or a combination of the IP Address, Part ID or a Date Time stamp. To access the Rundown report, either click on 'Reports' and then 'Rundown Report' from the menu, or click on the 'Execute Rundown Report' on the consoles main screen. This will bring up the Rundown output screen from where 'Run Report' can be clicked to open the report criteria page. The screen shots below show the Rundown report run with a filter on the Part ID equaling '3'.



To enable more than one criteria in the filter, simply click on the switch next to the criteria that you want to add and enter the value.

Data from a Rundown report can be exported directly to a .csv (comma separated values) file. This is done by clicking on 'Export to .csv' on the main screen of the Rundown report. There is also an option to include or exclude column headers for the .csv file, the default is to include the headers.

Web Based Rundown Reports

Web based reports allow any authorized user to access all the torque data stored by Assembly Host™ from any web enabled device with network access to the server that Assembly Host™ is installed on.

To access Assembly Host™ web reports, open a web browser and type the following, replacing {AHserverIP} with the server IP address or DNS name:

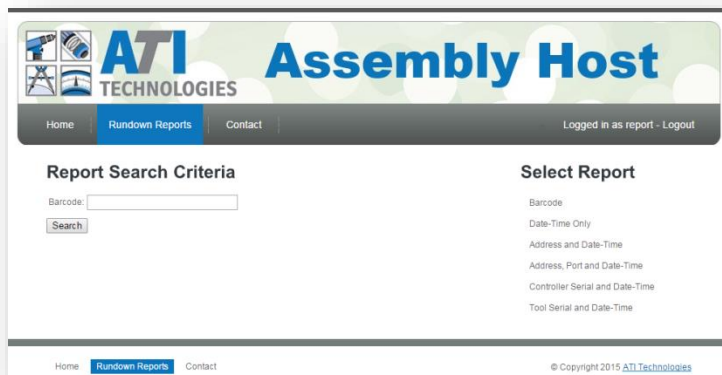
“http://{AHserverIP}:8040/HostWeb/Home.html”

Before running any reports, the user will be required to enter their username and password. By default Assembly Host™ comes with one username setup with the following credentials:

Username: ‘report’

Password: ‘report’

Users can be added, deleted and modified from the Assembly Host™ console by selecting ‘Settings’ then ‘User Rights’ from the menu.



Once logged in, a user is able to execute a variety of reports by selecting the report type from the right side of the web page under the ‘Select Report’ section.

Report results are shown by pressing the ‘Search’ button after filling out all search criteria.

Once a report is executed, a user has the ability to export those results to a .csv file (with column headers) to save on their local computer.

**** Note:** Assembly Host™ will install a firewall rule to open TCP port 8040 on the Windows firewall. This allows computers to access the web server when the Windows firewall is active. If a 3rd party firewall is used, this rule may need to be manually created. **

Legal and Copyright notices.

Assembly Host™ name and Assembly Host™ software package are copyrighted 2019 by ATI Technologies INC.

ATI Technologies and its affiliates reserve the right to modify and/or update this document at any time without prior notice.

The Assembly Host™ Technical Manual was created for general information about the Assembly Host™ software and may not represent the current release of the software in all areas.